

HEXChecks™

DETECT • MONITOR • ELIMINATE

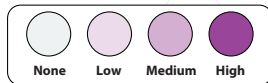
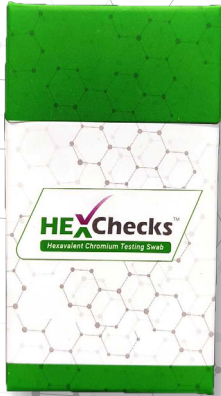
HEXCHECKS.COM



DETECT
the hazard before it is too late

MONITOR
the hazard to control conditions

ELIMINATE
the hazard to keep workers safe



HEXChecks™

Hexavalent Chromium Testing Swab

Use for **DETECTING** Hexavalent Chromium on any surface

- Easy To Use
- Instant Results
- Visual Confirmation
- On-Demand Testing

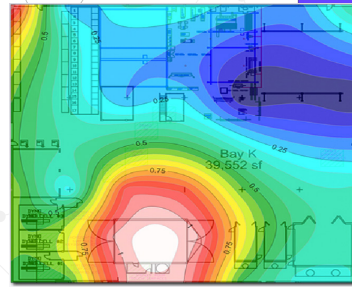
Officially tested and recommended by the U.S. Air Force

HEXChecks™

Dust Migration Mapping

Use for **DETECTING** dust migration pathways

- Easy To Use
- Rapid Visualization
- Simple Characterization
- Pinpoint Hazards



This dust migration map shows the extent of a known primary dust source (lower center) and identified an unknown secondary source in a welding cell (upper left).

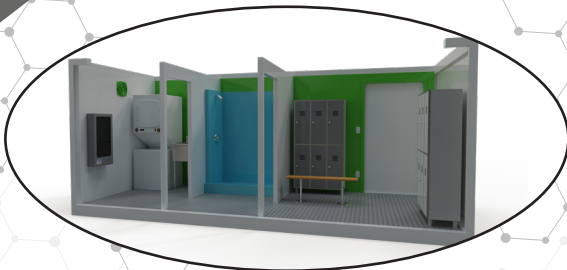
HEXChecks™

Continuous Monitoring

Use for **MONITORING** the concentration of airborne toxins

- Easy To Use
- Rapid Quantifiable Results
- NIOSH Tested
- Multiple Configurations



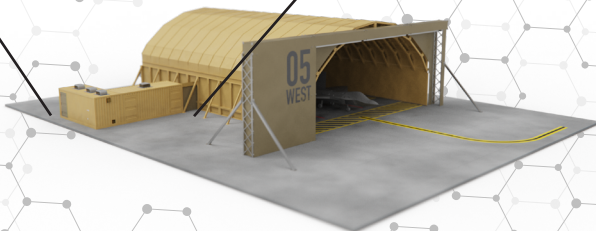
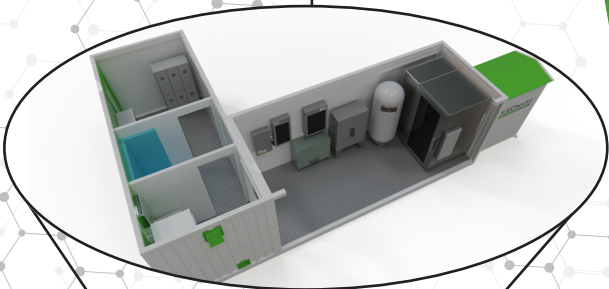


HEXChecks™

Personnel Decontamination System

Use for **ELIMINATING** hazardous materials from workers

- Easy To Use
- Turnkey Deployable System
- UFC Compliant
- Instant Safety Compliance



HEXChecks™

Hexavalent Chromium Neutralizer

Use for **ELIMINATING** Hexavalent Chromium on surfaces

- Easy To Use
- Non-Hazardous and Non-Toxic
- Works Instantly
- Safe and Reliable



FIGUREENGINEERING.COM

Figure Engineering developed HexChecks products to detect, monitor and eliminate hazards to keep workers safe. We deliver tailored, customized solutions centered around environmental, health and safety (EHS), automation and materials to provide novel mission capabilities, reduce process costs and improve safety. Our goal is to be a force multiplier, freeing resources to achieve your highest level of contribution.